



[SARC Home](#) » Golden Valley River

2019–2020 School Accountability Report Card

[Translation Disclaimer](#)

School Accountability Report Card

Reported Using Data from the 2019–2020 School Year

California Department of Education

By February 1 of each year, every school in California is required by state law to publish a School Accountability Report Card (SARC). The SARC contains information about the condition and performance of each California public school. Under the Local Control Funding Formula (LCFF) all local educational agencies (LEAs) are required to prepare a Local Control and Accountability Plan (LCAP), which describes how they intend to meet annual school-specific goals for all pupils, with specific activities to address state and local priorities. Additionally, data reported in an LCAP is to be consistent with data reported in the SARC.

- For more information about SARC requirements, see the California Department of Education (CDE) SARC web page at <https://www.cde.ca.gov/ta/ac/sa/>.
- For more information about the LCFF or LCAP, see the CDE LCFF web page at <https://www.cde.ca.gov/fg/aa/lc/>.
- For additional information about the school, parents/guardians and community members should contact the school principal or the district office.

DataQuest

DataQuest is an online data tool located on the CDE DataQuest web page at <https://dq.cde.ca.gov/dataquest/> that contains additional information about this school and comparisons of the school to the district and the county. Specifically, DataQuest is a dynamic system that provides reports for accountability (e.g., test data, enrollment, high school graduates, dropouts, course enrollments, staffing, and data regarding English learners).

California School Dashboard

The California School Dashboard (Dashboard) <https://www.caschooldashboard.org/> reflects California's new accountability and continuous improvement system and provides information about how LEAs and schools are meeting the needs of California's diverse student population. The Dashboard contains reports that display the performance of LEAs, schools, and student groups on a set of state and local measures to assist in identifying strengths, challenges, and areas in need of improvement.

Barbara Ames, Principal

- Principal, Golden Valley River



About Our School

Waldorf education provides children with a protected learning environment where they may remain children for as long as possible. Media usage is strongly discouraged in all grades but particularly in the lower grades in order to allow the imagination to develop and capacities for attention and comprehension to grow and deepen.

Children sing, draw, play recorders and other musical instruments, paint, dance, garden and learn handwork skills. Alongside academics the arts are integrated daily as part of each child's education. The arts are more than something "extra" at Golden Valley, because children benefit intellectually, emotionally and physically. Waldorf is an education for the whole child from the inside out. Learning never stops with Waldorf education; learning becomes a life-long endeavor.

Barbara Ames has a Masters degree in Special Education and graduated from CSU Sacramento with a Liberal Studies Bachelor's degree. She has been a teacher for 25 years and began administrating at the Golden Valley River School in April of 2016. She spent 14 years in main stream public school and went through Waldorf certification 12 years ago. She has served as an instructional assistant across grades 1-3, Resource Specialist and class teacher taking the Redwood class from grades 1-8 at the River School.

Contact

Golden Valley River
9601 Lake Natoma Dr.
Orangevale, CA 95662-5022

Phone: 916-987-6141

Email: bames@goldenvalleycharter.org

About This School

Contact Information (School Year 2020–2021)

District Contact Information (School Year 2020–2021)

District Name San Juan Unified

Phone Number (916) 971-7700

Superintendent Kent Kern

Email Address kkern@sanjuan.edu

Website <http://www.sanjuan.edu>

School Contact Information (School Year 2020–2021)

School Name Golden Valley River

Street 9601 Lake Natoma Dr.

City, State, Zip Orangevale, Ca, 95662-5022

Phone Number 916-987-6141

Principal Barbara Ames, Principal

Email Address bames@goldenvalleycharter.org

Website <http://www.goldenvalleycharter.org>

**County-District-School
(CDS) Code** 34674470114983

School Description and Mission Statement (School Year 2020–2021)

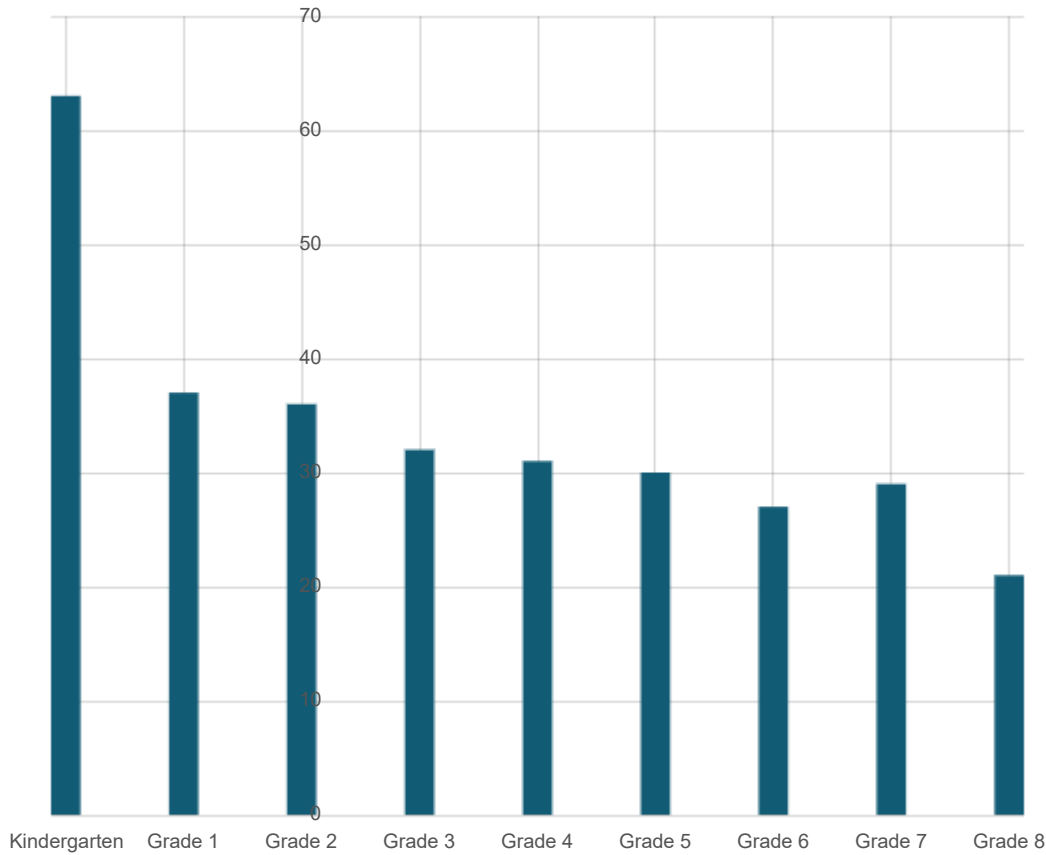
Since its founding in 1999, Golden Valley has offered a unique and highly effective interdisciplinary curriculum based on a deep understanding of the developmental stages of childhood. Here, learning is embedded in storytelling, movement, arts, music and direct experience of natural phenomena. The goal is to help students develop to their highest potential so they will one day actively create and participate in a vibrant, healthy society that serves the good of all.

Mission: We prepare our students to consciously engage with our evolving world by inspiring a lifelong passion for learning.

Vision: We are a leading network of Waldorf inspired public charter schools.

Student Enrollment by Grade Level (School Year 2019–2020)

Grade Level	Kindergarten	Grade 1	Grade 2	Grade 3	Grade 4	Grade 5	Grade 6	Grade 7	Grade 8	Total
Number of Students	63	37	36	32	31	30	27	29	21	



Last updated: 1/28/2021

Student Enrollment by Student Group (School Year 2019–2020)

Student Group	Black or African American	American Indian or Alaska Native	Asian	Filipino	Hispanic or La
Percent of Total Enrollment	%	0.30 %	1.30 %	1.00 %	16.30 %
Student Group (Other)	Socioeconomically Disadvantaged	English Learners	Students with Disabilities	Foster Youth	
Percent of Total Enrollment	30.40 %	1.00 %	6.90 %	%	

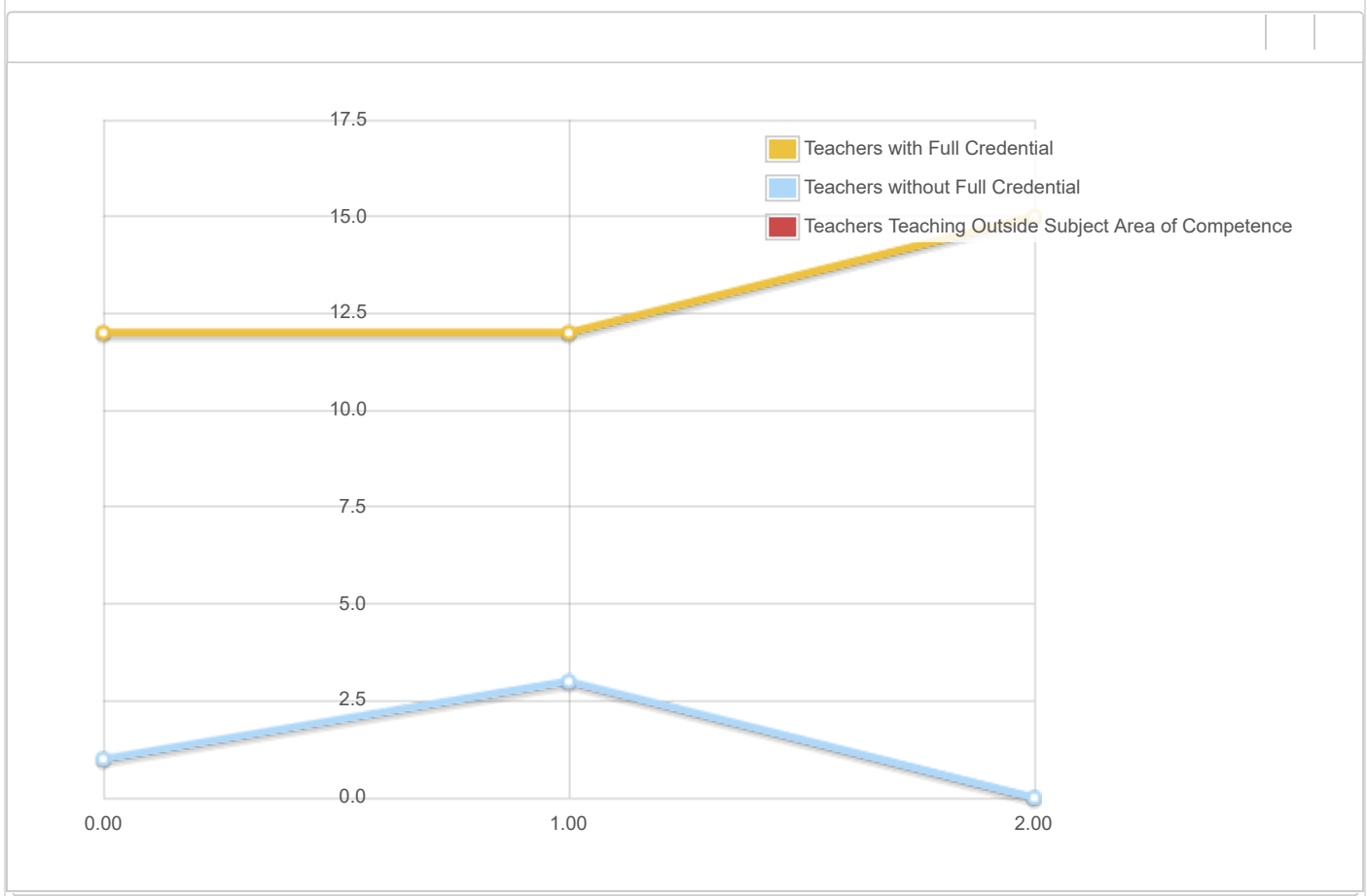
State Priority: Basic

The SARC provides the following information relevant to the State priority: Basic (Priority 1):

- Degree to which teachers are appropriately assigned and fully credentialed in the subject area and for the pupils they are teaching;
- Pupils have access to standards-aligned instructional materials; and
- School facilities are maintained in good repair

Teacher Credentials

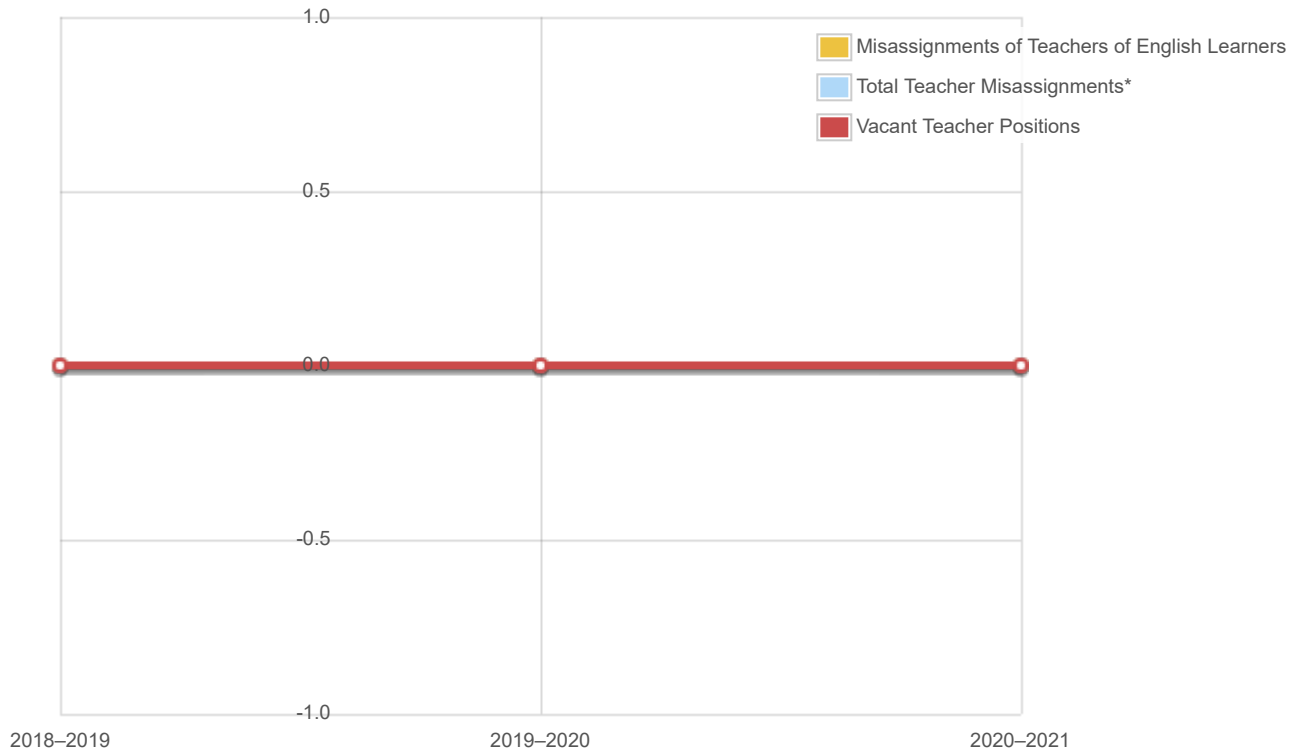
Teachers	School 2018– 2019	School 2019– 2020	School 2020– 2021	District 2020– 2021
With Full Credential	12	12	15	
Without Full Credential	1	3	0	
Teachers Teaching Outside Subject Area of Competence (with full credential)				



Last updated: 1/28/2021

Teacher Misassignments and Vacant Teacher Positions

Indicator	2018–2019	2019–2020	2020–2021
Misassignments of Teachers of English Learners	0	0	0
Total Teacher Misassignments*	0	0	0
Vacant Teacher Positions	0	0	0



Note: "Misassignments" refers to the number of positions filled by teachers who lack legal authorization to teach that grade level, subject area, student group, etc.

* Total Teacher Misassignments includes the number of Misassignments of Teachers of English Learners.

Last updated: 1/28/2021

Quality, Currency, Availability of Textbooks and Other Instructional Materials (School Year 2020-2021)

Year and month in which the data were collected:

Subject	Textbooks and Other Instructional Materials/year of Adoption	From Most Recent Adoption?	Percent Students Lacking Own Assigned Copy
Reading/Language Arts	Voyages in English Grammar and Writing, Loyola Press		0.00 %
Mathematics	Math in Focus, Singapore Math, Marshall Cavendish		0.00 %
Science			0.00 %
History-Social Science			0.00 %
Foreign Language			0.00 %
Health			0.00 %

Subject	Textbooks and Other Instructional Materials/year of Adoption	From Most Recent Adoption?	Percent Students Lacking Own Assigned Copy
Visual and Performing Arts			0.0 %
Science Lab Eqpmt (Grades 9-12)	N/A	N/A	0.0 %

Note: Cells with N/A values do not require data.

Last updated: 1/28/2021

School Facility Conditions and Planned Improvements

Golden Valley River School was inspected by San Juan Unified using the Facility Inspection Tool. The school was evaluated in the following categories: systems (gas leaks, hvac, sewer), interior, cleanliness, electrical, restrooms, sinks/fountains, fire safety, hazardous materials, structural damage, roofs, playgrounds, and windows/doors/gates/fences. The facility was rated 100% in good repair. There were no deficiencies noted. There are no pending work orders.

Last updated: 1/28/2021

School Facility Good Repair Status

Using the **most recently collected** Facility Inspection Tool (FIT) data (or equivalent), provide the following:

- Determination of repair status for systems listed
- Description of any needed maintenance to ensure good repair
- The year and month in which the data were collected
- The rate for each system inspected
- The overall rating

Year and month of the most recent FIT report: October 2020

System Inspected	Rating	Repair Needed and Action Taken or Planned
Systems: Gas Leaks, Mechanical/HVAC, Sewer	Good	
Interior: Interior Surfaces	Good	
Cleanliness: Overall Cleanliness, Pest/Vermin Infestation	Good	
Electrical: Electrical	Good	
Restrooms/Fountains: Restrooms, Sinks/Fountains	Good	
Safety: Fire Safety, Hazardous Materials	Good	
Structural: Structural Damage, Roofs	Good	

System Inspected	Rating	Repair Needed and Action Taken or Planned
External: Playground/School Grounds, Windows/Doors/Gates/Fences	Good	

Overall Facility Rate

Year and month of the most recent FIT report: October 2020

Overall Rating	Good
----------------	------

Last updated: 1/28/2021

State Priority: Pupil Achievement

The SARC provides the following information relevant to the State priority: Pupil Achievement (Priority 4):

- **Statewide assessments** (i.e., California Assessment of Student Performance and Progress [CAASPP] System, which includes the Smarter Balanced Summative Assessments for students in the general education population and the California Alternate Assessments [CAAs] for English language arts/literacy [ELA] and mathematics given in grades three through eight and grade eleven. Only eligible students may participate in the administration of the CAAs. CAAs items are aligned with alternate achievement standards, which are linked with the Common Core State Standards [CCSS] for students with the most significant cognitive disabilities); and
- The percentage of students who have successfully completed courses that satisfy the requirements for entrance to the University of California and the California State University, or career technical education sequences or programs of study.

CAASPP Test Results in ELA and Mathematics for All Students

Grades Three through Eight and Grade Eleven

Percentage of Students Meeting or Exceeding the State Standard

Subject	School 2018– 2019	School 2019– 2020	District 2018– 2019	District 2019– 2020	State 2018– 2019	State 2019– 2020
English Language Arts / Literacy (grades 3-8 and 11)	65.0%	N/A	46.0%	N/A	50%	N/A
Mathematics (grades 3-8 and 11)	33.0%	N/A	35.0%	N/A	39%	N/A

Note: Cells with N/A values do not require data.

Note: The 2019–2020 data are not available. Due to the COVID-19 pandemic, Executive Order N-30-20 was issued which waived the requirement for statewide testing for the 2019–2020 school year.

Note: Percentages are not calculated when the number of students tested is ten or less, either because the number of students in this category is too small for statistical accuracy or to protect student privacy.

Note: ELA and mathematics test results include the Smarter Balanced Summative Assessment and the CAA. The "Percent Met or Exceeded" is calculated by taking the total number of students who met or exceeded the standard on the Smarter Balanced

Summative Assessment plus the total number of students who met the standard (i.e., achieved Level 3-Alternate) on the CAAs divided by the total number of students who participated in both assessments.

Last updated: 1/28/2021

CAASPP Test Results in ELA by Student Group
Grades Three through Eight and Grade Eleven (School Year 2019–2020)

Student Group	Total Enrollment	Number Tested	Percent Tested	Percent Not Tested	Percent Met or Exceeded
All Students	N/A	N/A	N/A	N/A	N/A
Male	N/A	N/A	N/A	N/A	N/A
Female	N/A	N/A	N/A	N/A	N/A
Black or African American	N/A	N/A	N/A	N/A	N/A
American Indian or Alaska Native	N/A	N/A	N/A	N/A	N/A
Asian	N/A	N/A	N/A	N/A	N/A
Filipino	N/A	N/A	N/A	N/A	N/A
Hispanic or Latino	N/A	N/A	N/A	N/A	N/A
Native Hawaiian or Pacific Islander	N/A	N/A	N/A	N/A	N/A
White	N/A	N/A	N/A	N/A	N/A
Two or More Races	N/A	N/A	N/A	N/A	N/A
Socioeconomically Disadvantaged	N/A	N/A	N/A	N/A	N/A
English Learners	N/A	N/A	N/A	N/A	N/A
Students with Disabilities	N/A	N/A	N/A	N/A	N/A
Students Receiving Migrant Education Services	N/A	N/A	N/A	N/A	N/A
Foster Youth	N/A	N/A	N/A	N/A	N/A
Homeless	N/A	N/A	N/A	N/A	N/A

Note: Cells with N/A values do not require data.

Note: The 2019–2020 data are not available. Due to the COVID-19 pandemic, Executive Order N-30-20 was issued which waived the requirement for statewide testing for the 2019–2020 school year.

Last updated: 1/28/2021

CAASPP Test Results in Mathematics by Student Group
Grades Three through Eight and Grade Eleven (School Year 2019–2020)

Student Group	Total Enrollment	Number Tested	Percent Tested	Percent Not Tested	Percent Met or Exceeded
All Students	N/A	N/A	N/A	N/A	N/A
Male	N/A	N/A	N/A	N/A	N/A
Female	N/A	N/A	N/A	N/A	N/A
Black or African American	N/A	N/A	N/A	N/A	N/A
American Indian or Alaska Native	N/A	N/A	N/A	N/A	N/A
Asian	N/A	N/A	N/A	N/A	N/A
Filipino	N/A	N/A	N/A	N/A	N/A
Hispanic or Latino	N/A	N/A	N/A	N/A	N/A
Native Hawaiian or Pacific Islander	N/A	N/A	N/A	N/A	N/A
White	N/A	N/A	N/A	N/A	N/A
Two or More Races	N/A	N/A	N/A	N/A	N/A
Socioeconomically Disadvantaged	N/A	N/A	N/A	N/A	N/A
English Learners	N/A	N/A	N/A	N/A	N/A
Students with Disabilities	N/A	N/A	N/A	N/A	N/A
Students Receiving Migrant Education Services	N/A	N/A	N/A	N/A	N/A
Foster Youth	N/A	N/A	N/A	N/A	N/A
Homeless	N/A	N/A	N/A	N/A	N/A

Note: Cells with N/A values do not require data.

Note: The 2019–2020 data are not available. Due to the COVID-19 pandemic, Executive Order N-30-20 was issued which waives the requirement for statewide testing for the 2019–2020 school year.

Last updated: 1/28/2021

CAASPP Test Results in Science for All Students
Grades Five, Eight and High School
Percentage of Students Meeting or Exceeding the State Standard

Subject	School 2018–2019	School 2019–2020	District 2018–2019	District 2019–2020	State 2018–2019	State 2019–2020
Science (grades 5, 8, and high school)	37	N/A	29	N/A	30	N/A

Note: Cells with N/A values do not require data.

Note: The 2019–2020 data are not available. Due to the COVID-19 pandemic, Executive Order N-30-20 was issued which waived the requirement for statewide testing for the 2019–2020 school year.

Note: The new California Science Test (CAST) was first administered operationally in the 2018–2019 school year.

Last updated: 1/28/2021

CAASPP Tests Results in Science by Student Group
Grades Five, Eight and High School (School Year 2019–2020)

Student Group	Total Enrollment	Number Tested	Percent Tested	Percent Not Tested	Percent Met or Exceeded
All Students	N/A	N/A	N/A	N/A	N/A
Male	N/A	N/A	N/A	N/A	N/A
Female	N/A	N/A	N/A	N/A	N/A
Black or African American	N/A	N/A	N/A	N/A	N/A
American Indian or Alaska Native	N/A	N/A	N/A	N/A	N/A
Asian	N/A	N/A	N/A	N/A	N/A
Filipino	N/A	N/A	N/A	N/A	N/A
Hispanic or Latino	N/A	N/A	N/A	N/A	N/A
Native Hawaiian or Pacific Islander	N/A	N/A	N/A	N/A	N/A
White	N/A	N/A	N/A	N/A	N/A
Two or More Races	N/A	N/A	N/A	N/A	N/A
Socioeconomically Disadvantaged	N/A	N/A	N/A	N/A	N/A
English Learners	N/A	N/A	N/A	N/A	N/A
Students with Disabilities	N/A	N/A	N/A	N/A	N/A
Students Receiving Migrant Education Services	N/A	N/A	N/A	N/A	N/A

Student Group	Total Enrollment	Number Tested	Percent Tested	Percent Not Tested	Percent Met or Exceeded
Foster Youth	N/A	N/A	N/A	N/A	N/A
Homeless	N/A	N/A	N/A	N/A	N/A

Note: Cells with N/A values do not require data.

Note: The 2019–2020 data are not available. Due to the COVID-19 pandemic, Executive Order N-30-20 was issued which waived the requirement for statewide testing for the 2019–2020 school year.

Last updated: 1/28/2021

State Priority: Other Pupil Outcomes

The SARC provides the following information relevant to the State priority: Other Pupil Outcomes (Priority 8):

- Pupil outcomes in the subject area of physical education

California Physical Fitness Test Results (School Year 2019–2020)

Grade Level	Percentage of Students Meeting Four of Six Fitness Standards	Percentage of Students Meeting Five of Six Fitness Standards	Percentage of Students Meeting Six of Six Fitness Standards

Note: Cells with N/A values do not require data.

Note: The 2019–2020 data are not available. Due to the COVID-19 pandemic, Executive Order N-56-20 was issued which waived the requirement to administer the physical fitness performance test for the 2019–2020 school year.

Last updated: 1/28/2021

State Priority: Parental Involvement

The SARC provides the following information relevant to the State priority: Parental Involvement (Priority 3):

- Efforts the school district makes to seek parent input in making decisions for the school district and each school site

Opportunities for Parental Involvement (School Year 2020–2021)

- Parent Circle Meetings - monthly
- Class Meetings - twice per year or more
- School Festivals - 1-2 per year
- Parent Enrichment Evenings - 3 per year
- LCAP Stakeholder Engagement Meetings - once per year
- LCAP Parent Survey - once per year

All engagement has been converted to an online format due to the Covid19 pandemic.

Last updated: 1/28/2021

State Priority: Pupil Engagement

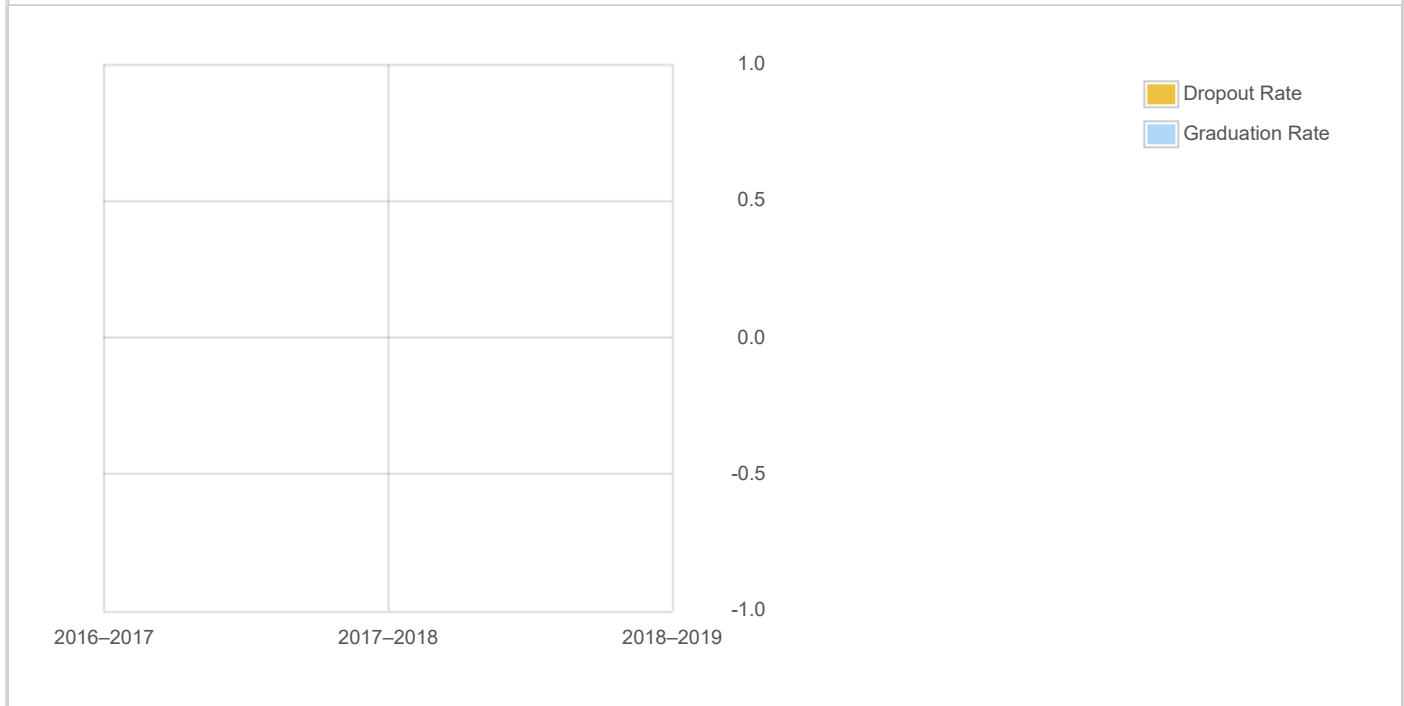
The SARC provides the following information relevant to the State priority: Pupil Engagement (Priority 5):

- High school dropout rates; and
- High school graduation rates

Dropout Rate and Graduation Rate (Four-Year Cohort Rate)

Indicator	School 2016– 2017	School 2017– 2018	School 2018– 2019	District 2016– 2017	District 2017– 2018	District 2018– 2019	State 2016– 2017	State 2017– 2018	State 2018– 2019
Dropout Rate	--	--	--	10.30%	11.70%	10.90%	9.10%	9.60%	9.00%
Graduation Rate	--	--	--	78.30%	76.60%	78.80%	82.70%	83.00%	84.50%

Dropout/Graduation Rate (Four-Year Cohort Rate) Chart



Last updated: 1/28/2021

State Priority: School Climate

The SARC provides the following information relevant to the State priority: School Climate (Priority 6):

- Pupil suspension rates;
- Pupil expulsion rates; and
- Other local measures on the sense of safety

Suspensions and Expulsions

(data collected between July through June, each full school year respectively)

Rate	Suspensions	Expulsions
School 2017–2018	1.60%	0.00%
School 2018–2019	0.60%	0.00%
District 2017–2018	5.80%	0.10%
District 2018–2019	4.90%	0.10%
District 2017–2018	3.50%	0.10%
District 2018–2019	3.50%	0.10%

**State
2017–2018**

Suspensions and Expulsions for School Year 2019–2020 Only

State (data collected between July through February, partial school year due to the COVID-19 pandemic)

Rate	Suspensions	Expulsions
School 2019–2020	1.06%	0.00%
District 2019–2020	--	--
District 2019–2020	2.50%	0.10%

**State
2019–2020**

Note: The 2019–2020 suspensions and expulsions rate data are not comparable to prior year data because the 2019–2020 school year is a partial school year due to the COVID-19 crisis. As such, it would be inappropriate to make any comparisons in rates of suspensions and expulsions in the 2019–2020 school year compared to prior years.

Last updated: 1/28/2021

School Safety Plan (School Year 2020–2021)

The GVCS Safety Plans will be reviewed and approved at the February 2021 Board of Trustees meeting.

Last updated: 1/28/2021

The information in this section is required to be in the SARC but is not included in the state priorities for LCFF.

Average Class Size and Class Size Distribution (Elementary) School Year (2017–2018)

Grade Level	K	1	2	3	4	5	6	Other**
Average Class Size	22.00	31.00	30.00	30.00	30.00	26.00	29.00	
Number of Classes * 1-20	2	1	1	1	1	1	1	
Number of Classes * 21-32								

* Number of classes indicates how many classes fall into each size category (a range of total students per class).
 ** "Other" category is for multi-grade level classes.

Average Class Size and Class Size Distribution (Elementary) School Year (2018–2019)

Grade Level	K	1	2	3	4	5	6	Other**
Average Class Size	23.00	31.00	31.00	29.00	29.00	28.00	26.00	
Number of Classes * 1-20	2	1	1	1	1	1	1	
Number of Classes * 21-32								

* Number of classes indicates how many classes fall into each size category (a range of total students per class).
 ** "Other" category is for multi-grade level classes.

Average Class Size and Class Size Distribution (Elementary) School Year (2019–2020)

Grade Level	K	1	2	3	4	5	6	Other**
Average Class Size	21.00	31.00	28.00	29.00	28.00	30.00	27.00	21.00
Number of Classes * 1-20	1							
		1	1	1	1	1	1	1
Number of Classes * 21-32	2							

Number of Classes *
33+

* Number of classes indicates how many classes fall into each size category (a range of total students per class).
 ** "Other" category is for multi-grade level classes.

Last updated: 1/28/2021

Average Class Size and Class Size Distribution (Secondary) (School Year 2017–2018)

Subject	English	Mathematics	Science	Social Science
Average Class Size				
Number of Classes *				
1-22				

Number of Classes * 23-32 * Number of classes indicates how many classrooms fall into each size category (a range of total students per classroom). At the secondary school level, this information is reported by subject area rather than grade level.

Number of Classes * 33+

Average Class Size and Class Size Distribution (Secondary) (School Year 2018–

2019)

Subject	English	Mathematics	Science	Social Science
Average Class Size				
Number of Classes *				
1-22				

Number of Classes * 23-32 * Number of classes indicates how many classrooms fall into each size category (a range of total students per classroom). At the secondary school level, this information is reported by subject area rather than grade level.

Number of Classes * 33+

Average Class Size and Class Size Distribution (Secondary) (School Year 2019–

2020)

Subject	English	Mathematics	Science	Social Science
Average Class Size				
Number of Classes *				
1-22				

Number of Classes * 23-32

Number of Classes * 33+

* Number of classes indicates how many classrooms fall into each size category (a range of total students per classroom). At the secondary school level, this information is reported by subject area rather than grade level.

Last updated: 1/28/2021

Ratio of Pupils to Academic Counselor (School Year 2019–2020)

Title	Ratio
Pupils to Academic Counselor*	0.0

*One full time equivalent (FTE) equals one staff member working full time; one FTE could also represent two staff members who each work 50 percent of full time.

Last updated: 1/28/2021

Student Support Services Staff (School Year 2019–2020)

	Number of FTE* Assigned to School
Counselor (Academic, Social/Behavioral or Career Development)	0.10
Library Media Teacher (Librarian)	0.05
Library Media Services Staff (Paraprofessional)	0.00
Psychologist	0.40
Social Worker	0.00
Nurse	0.10
Speech/Language/Hearing Specialist	0.60
Resource Specialist (non-teaching)	1.00
Other	0.60

*One full time equivalent (FTE) equals one staff member working full time; one FTE could also represent two staff members who each work 50 percent of full time.

Last updated: 1/28/2021

Expenditures Per Pupil and School Site Teacher Salaries (Fiscal Year 2018–2019)

Level	Total Expenditures Per Pupil	Expenditures Per Pupil (Restricted)	Expenditures Per Pupil (Unrestricted)	Average Teacher Salary
School Site	\$9540.00	\$479.00	\$9061.00	\$57912.00
District	N/A	N/A	--	\$78090.00
Percent Difference – School Site and District	N/A	N/A	--	-30.00%
State	N/A	N/A	\$7750.12	\$83052.00

Level	Total Expenditures Per Pupil	Expenditures Per Pupil (Restricted)	Expenditures Per Pupil (Unrestricted)	Average Teacher Salary
Percent Difference – School Site and State	N/A	N/A	16.00%	-36.00%

Note: Cells with N/A values do not require data.

Last updated: 2/1/2021

Types of Services Funded (Fiscal Year 2019–2020)

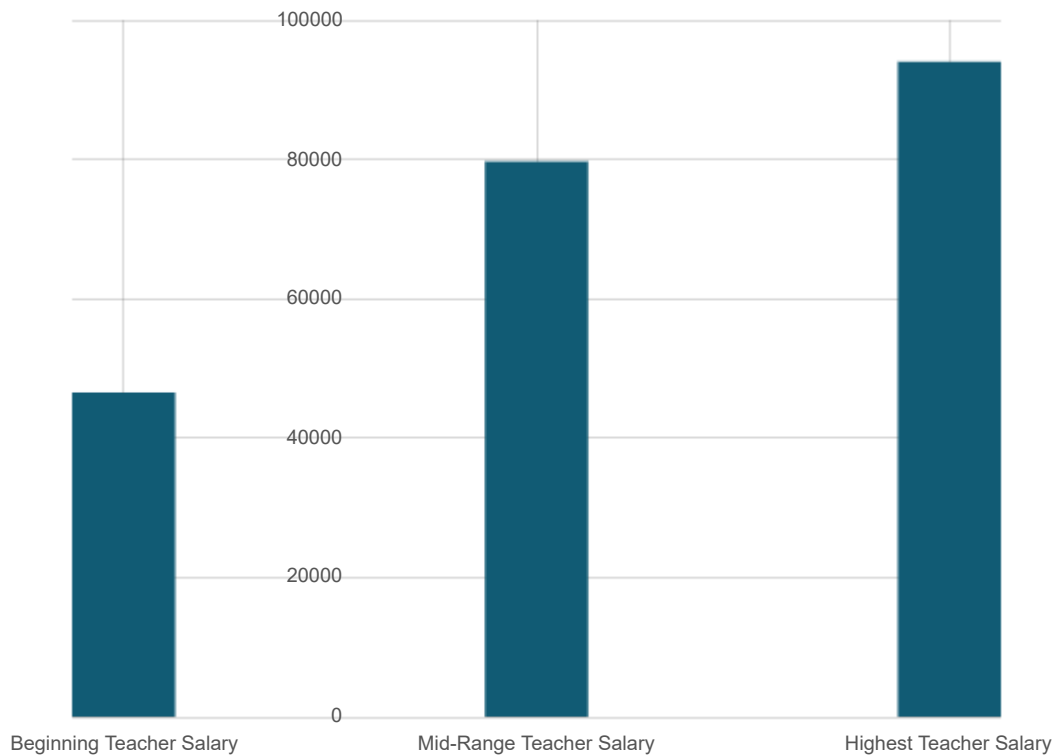
GVCS offers the full spectrum of special education and general education student supports. We approach the common core standards through the Waldorf curriculum. Students who struggle can receive academic support from an education specialist on staff. Middle school students are leveled based on math ability and there are study halls provided with support teachers. The arts-integrated approach provides for multiple modalities of instruction to meet diverse learning styles and interests. These include, music, handwork, gardening, drama, painting, and movement. Teachers use formative assessments to tailor interventions and create new challenges for students at grade level.

Last updated: 1/28/2021

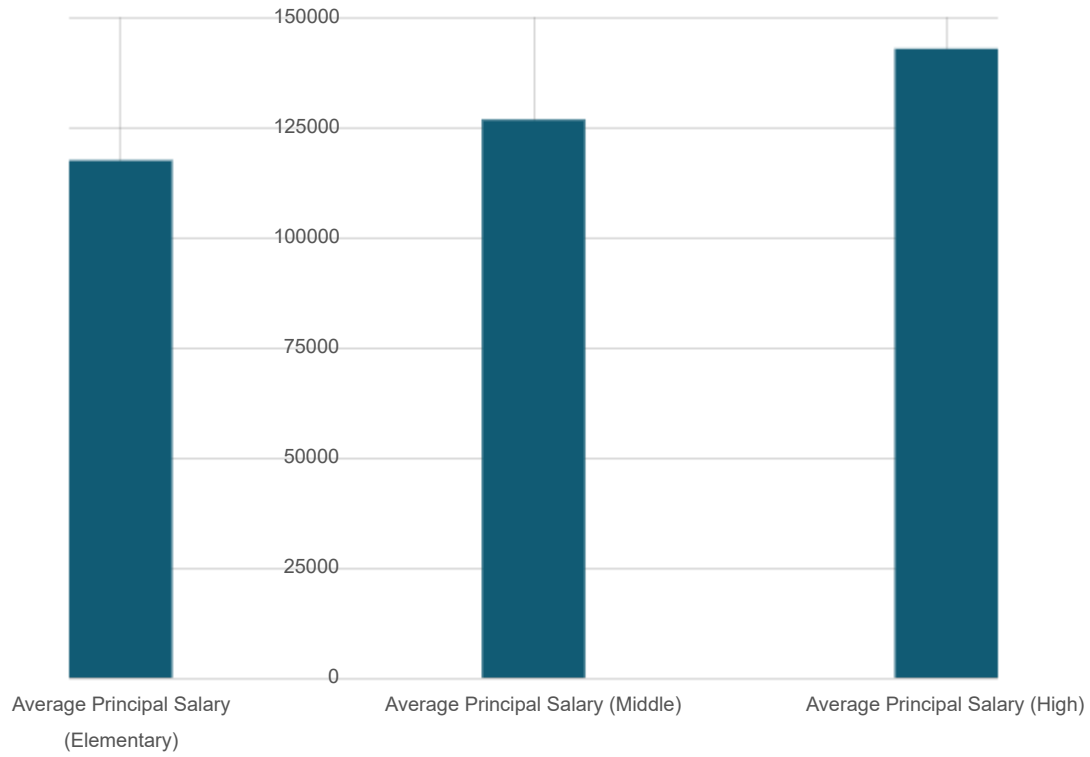
Teacher and Administrative Salaries (Fiscal Year 2018–2019)

Category	District Amount	State Average For Districts In Same Category
Beginning Teacher Salary	\$46,561	\$50,029
Mid-Range Teacher Salary	\$79,708	\$77,680
Highest Teacher Salary	\$94,014	\$102,143
Average Principal Salary (Elementary)	\$117,459	\$128,526
Average Principal Salary (Middle)	\$126,710	\$133,574
Average Principal Salary (High)	\$142,797	\$147,006
Superintendent Salary	\$283,645	\$284,736
Percent of Budget for Teacher Salaries	34.00%	33.00%
Percent of Budget for Administrative Salaries	6.00%	5.00%

For detailed information on salaries, see the CDE Certificated Salaries & Benefits web page at <https://www.cde.ca.gov/ds/fd/cs/>.

Teacher Salary Chart

Principal Salary Chart



Last updated: 1/28/2021

Advanced Placement (AP) Courses (School Year 2019–2020)

Percent of Students in AP Courses --

Subject	Number of AP Courses Offered*
Computer Science	0
English	0
Fine and Performing Arts	0
Foreign Language	0
Mathematics	0
Science	0
Social Science	0
Total AP Courses Offered*	0

*Where there are student course enrollments of at least one student.

Last updated: 1/28/2021

Professional Development

Measure	2018–2019	2019–2020	2020–2021
Number of school days dedicated to Staff Development and Continuous Improvement	5	5	5

Questions: SARC TEAM | sarc@cde.ca.gov | 916-319-0406

California Department of Education
 1430 N Street
 Sacramento, CA 95814